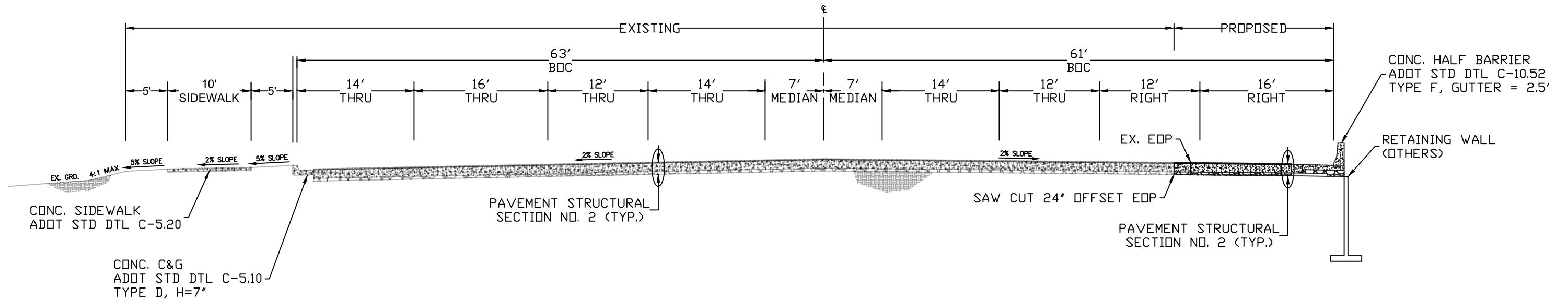
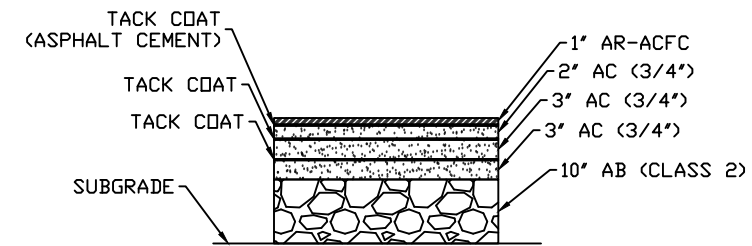
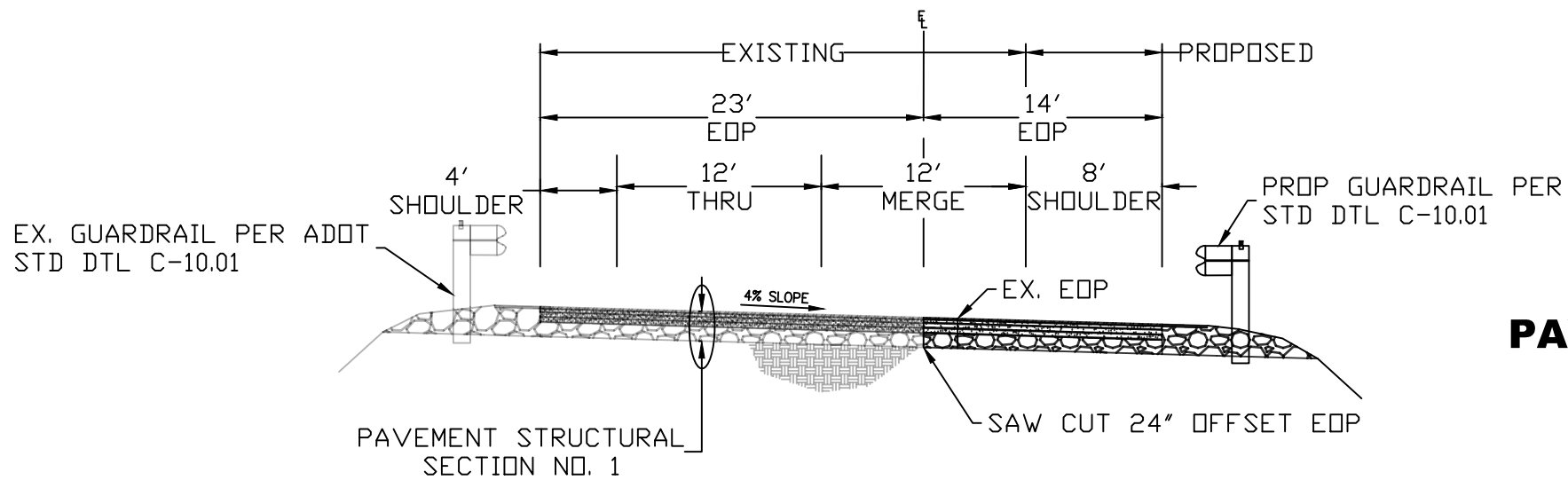


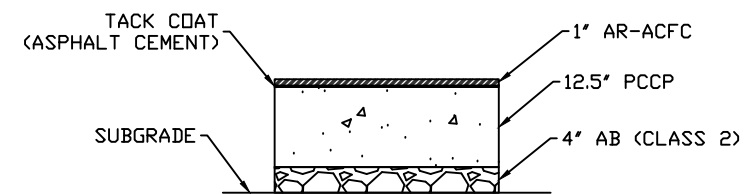
**PROPOSED ROADWAY  
STA 22+39.6 TO STA 26+09.3  
COUNTRY CLUB DRIVE**



**PROPOSED ROADWAY  
STA 06+03.75 TO STA 11+03.44  
I-40 WESTBOUND ON-RAMP**



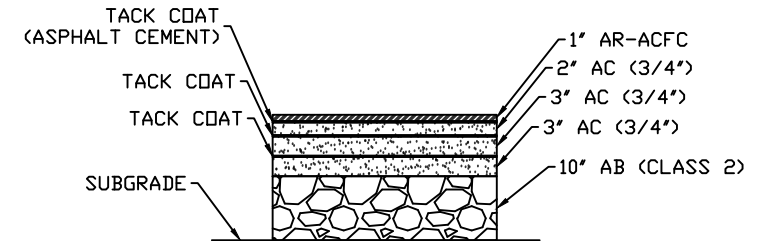
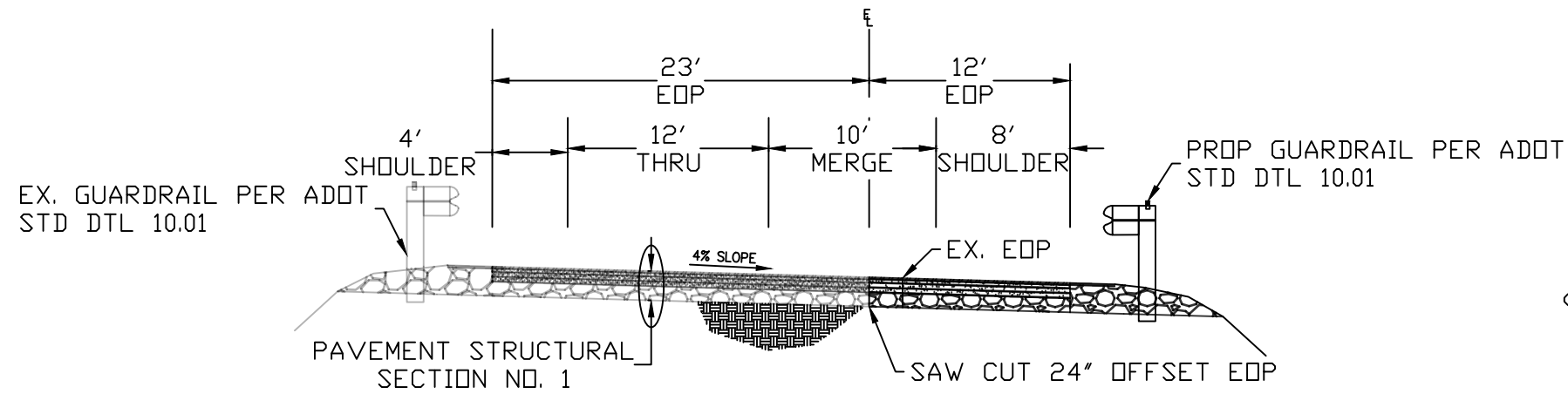
**PAVEMENT STRUCTURAL SECTION NO. 1**



**PAVEMENT STRUCTURAL SECTION NO. 2**

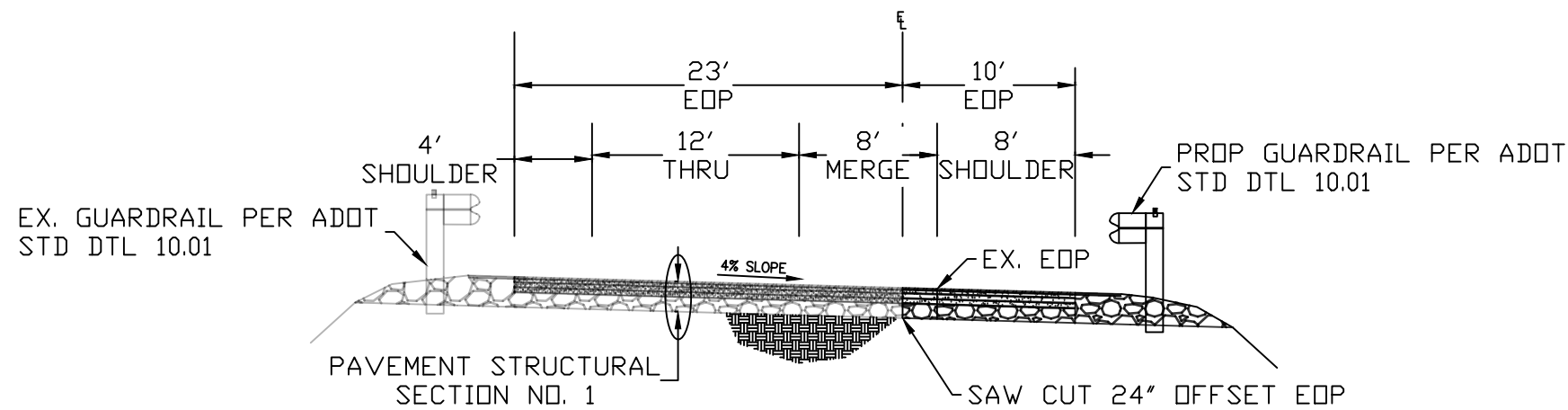
DATE	05/05/20	REV 1:		REV 2:	
I-40/CC IMPROVEMENT PROJECT					
					LOCATION FLAGSTAFF, AZ
DESIGN	MT	SHEET TITLE		TX01	
DRAWN	MT				
CHECK	ZJ	NO. 14	OF	27	

**PROPOSED ROADWAY  
STA 11+53.44  
I-40 WESTBOUND ON-RAMP**

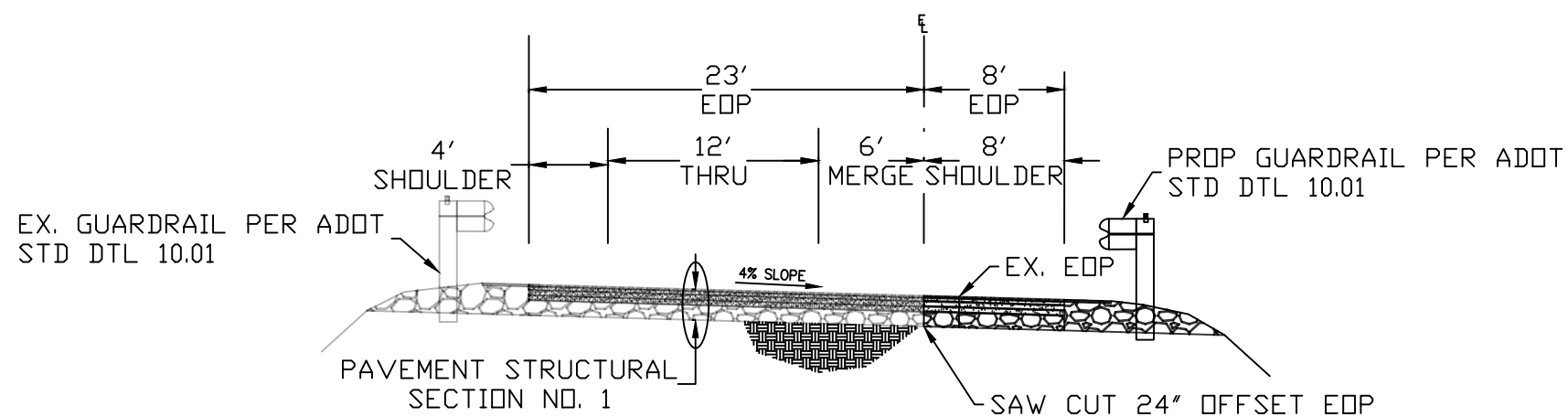


**PAVEMENT STRUCTURAL SECTION NO. 1**

**PROPOSED ROADWAY  
STA 12+03.44  
I-40 WESTBOUND ON-RAMP**

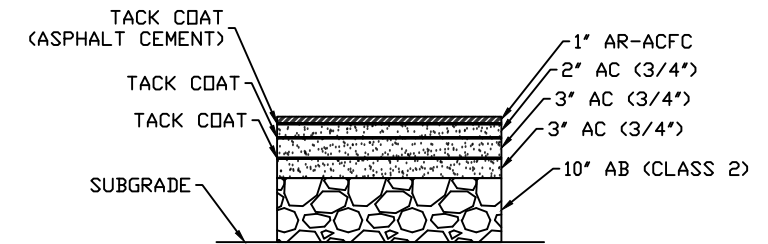
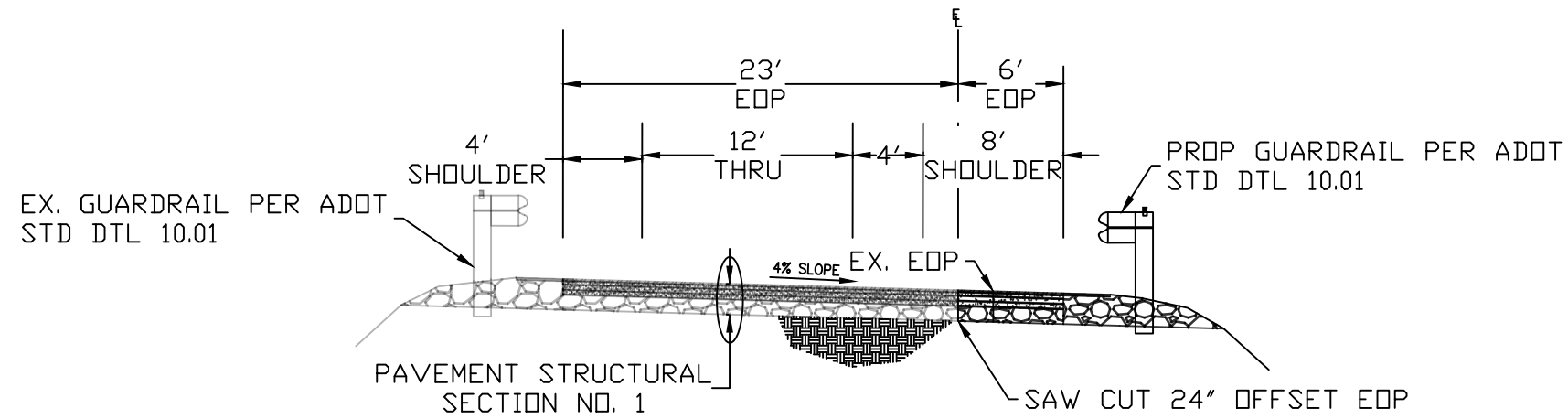


**PROPOSED ROADWAY  
STA 12+53.44  
I-40 WESTBOUND ON-RAMP**



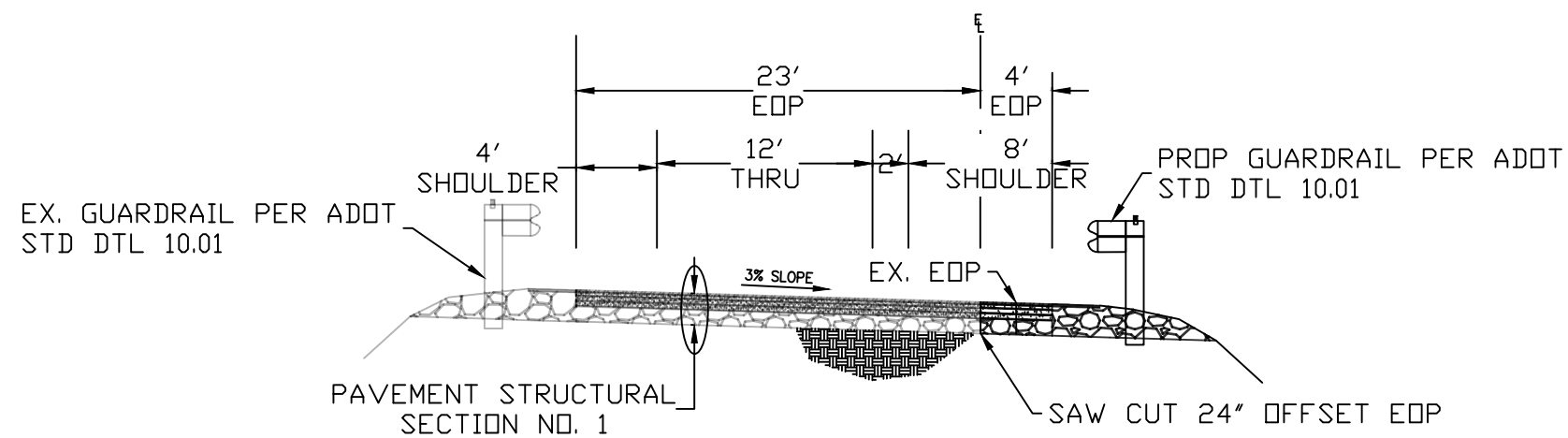
DATE	05/05/20	REV 1:		REV 2:	
I-40/CC IMPROVEMENT PROJECT		FLAGSTAFF, AZ			
DESIGN	MT	SHEET TITLE			
DRAWN	MT	TX02			
CHECK	ZJ	NO. 15		OF 27	

**PROPOSED ROADWAY  
STA 13+03.44  
I-40 WESTBOUND ON-RAMP**

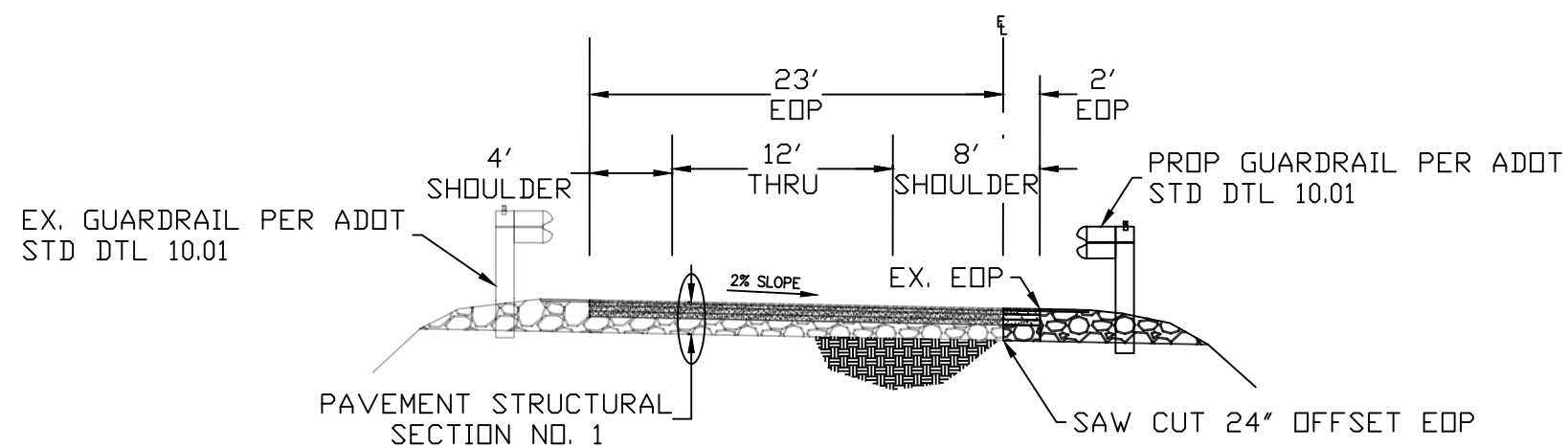


**PAVEMENT STRUCTURAL SECTION NO. 1**

**PROPOSED ROADWAY  
STA 13+53.44  
I-40 WESTBOUND ON-RAMP**



**PROPOSED ROADWAY  
STA 14+13.29  
I-40 WESTBOUND ON-RAMP**



DATE	05/05/20	REV 1:		REV 2:	
I-40/CC		IMPROVEMENT PROJECT		FLAGSTAFF, AZ	
DESIGN	MT	SHEET TITLE		TX03	
DRAWN	MT	NO. 16		OF 27	
CHECK	ZJ				

CONSTRUCTION

NO.	DESCRIPTION	QTY.	UN.
①	AB (CLASS 2)	15	TON
②	PORTLAND CEMENT CONCRETE PAVEMENT (12.5")	90	SY
③	BITUMINOUS TACK COAT (0.5")	2	TON
⑤	ASPHALTIC CONCRETE FRICTION COARSE (1")	4	TON
⑥	CONCRETE HALF BARRIER PER ADOT STD DTL C-10.52, TYPE F, GUTTER = 2.5'	98	LF
⑦	RETAINING WALL (OTHERS)	98	LF

REMOVAL

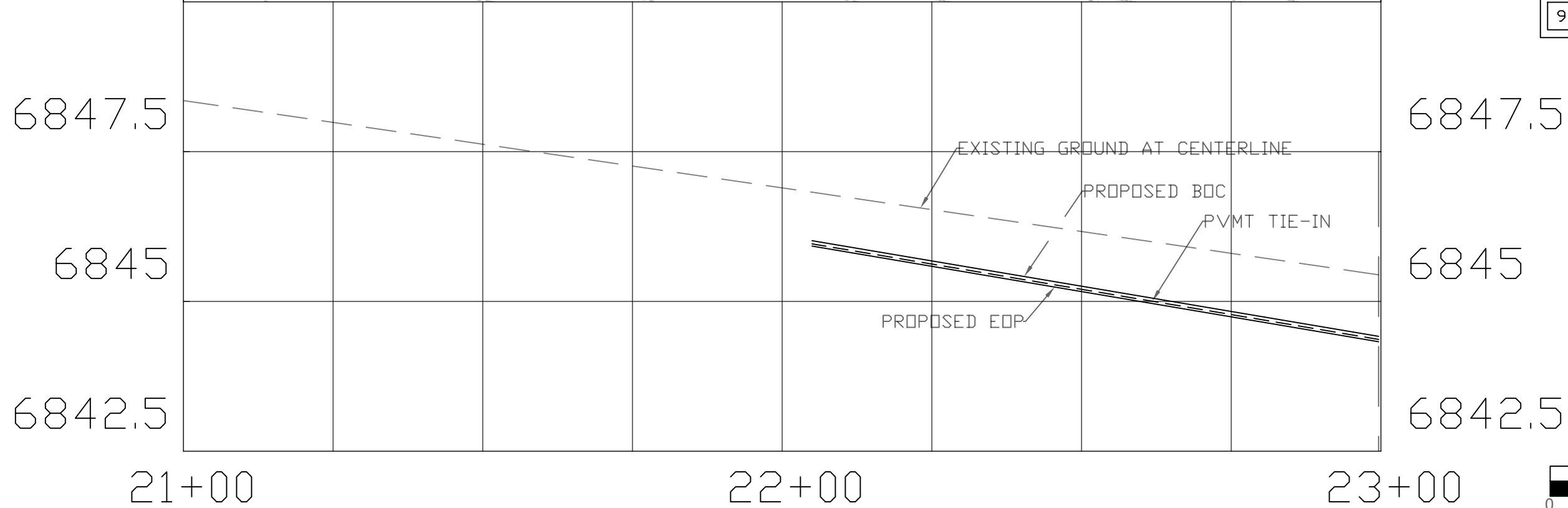
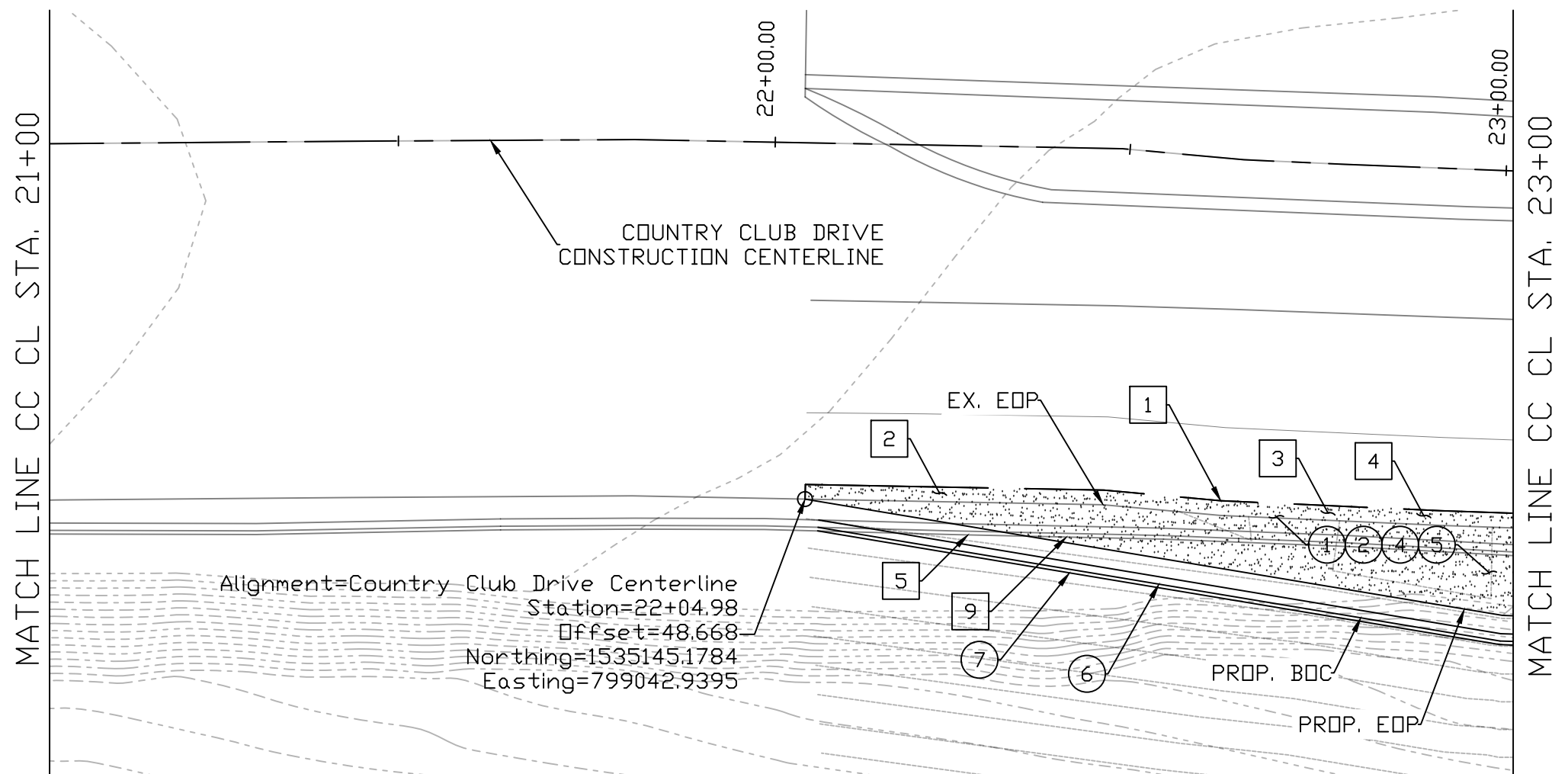
NO.	DESCRIPTION	QTY.	UN.
①	SAW CUT	59	LF
②	PCCP	13	SY
③	AGGREGATE BASE	13	SY
④	ASPHALTIC PAVEMENT	13	SY
⑤	CONC HALF BARRIER	57	LF
⑨	RETAINING WALL	57	LF

DATE	05/05/20
REV 1:	
REV 2:	

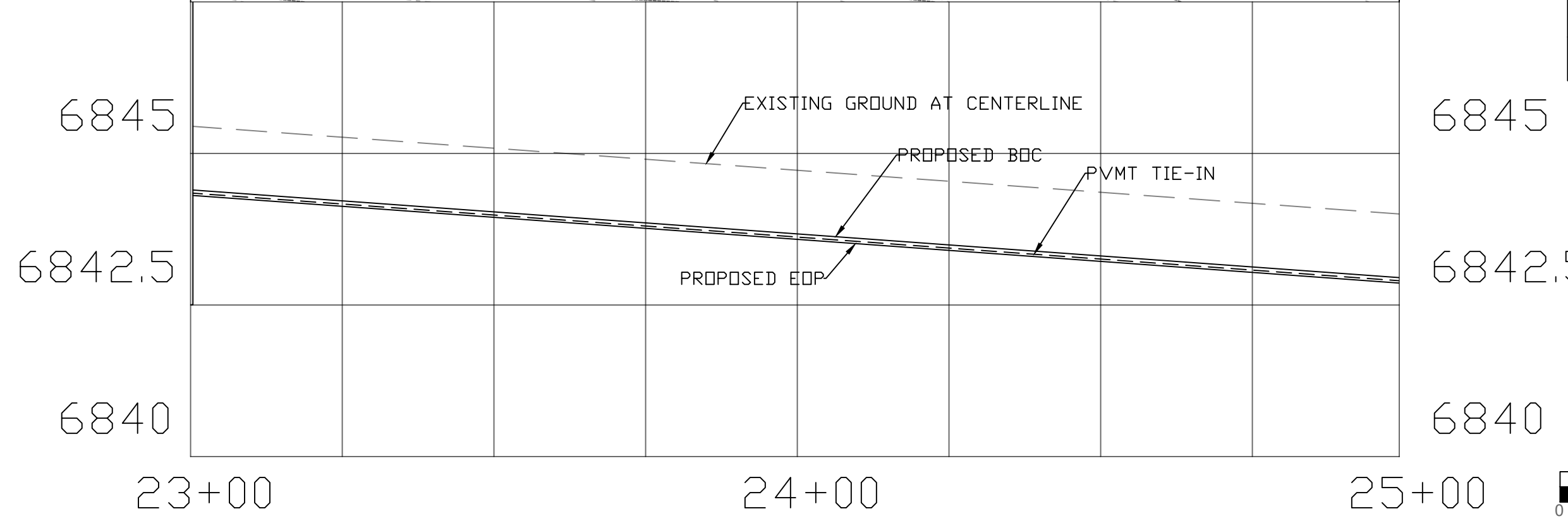
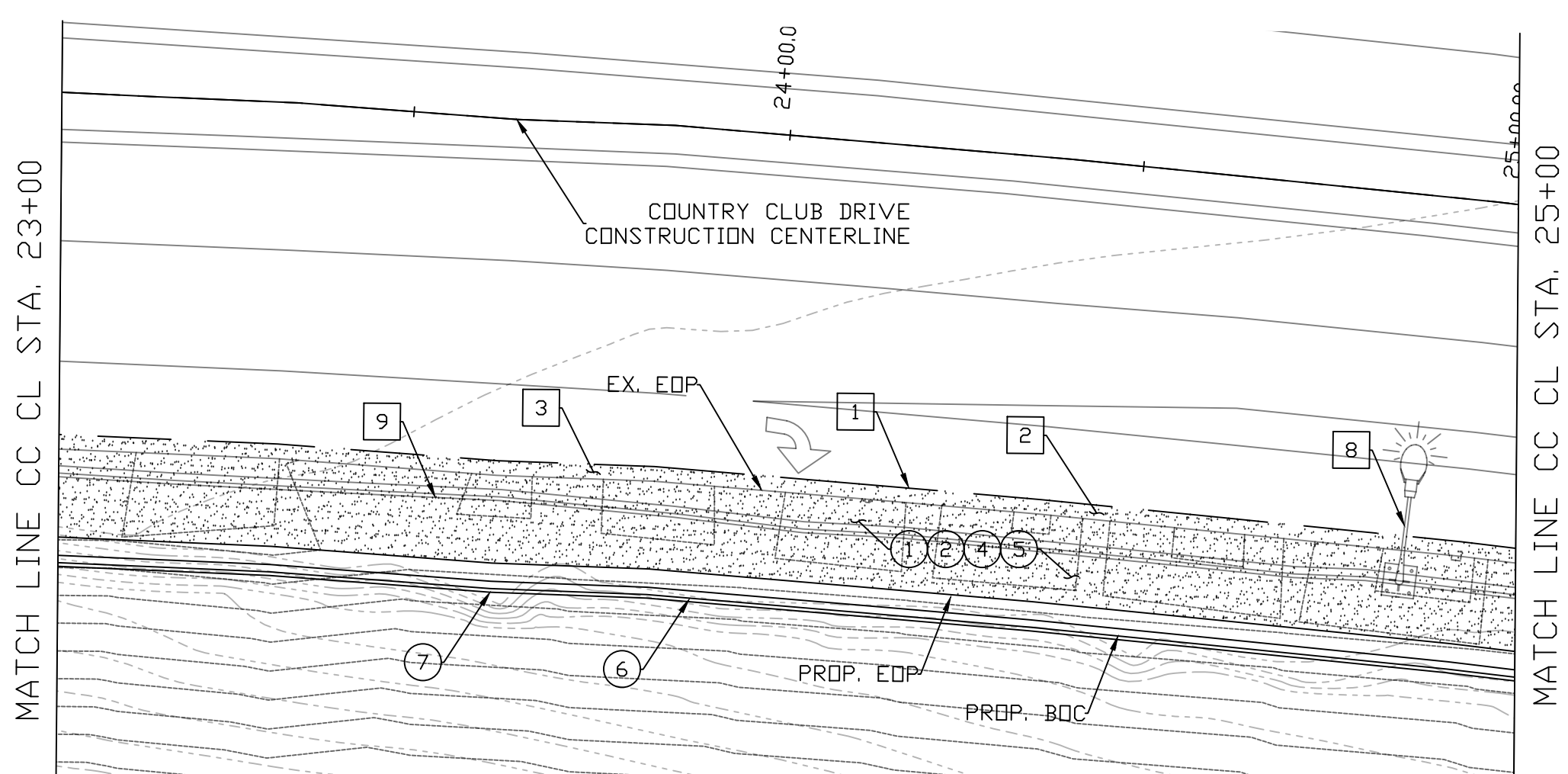
I-40/CC  
IMPROVEMENT PROJECT

LOCATION  
FLAGSTAFF, AZ

DESIGN	MT	SHEET TITLE	PV01
DRAWN	MT	NO.	17 OF 27
CHECK	ZJ		



HORIZONTAL: 1" = 20'  
 VERTICAL: 1" = 2'  
 SCALE 1" = 20'



CONSTRUCTION			
NO.	DESCRIPTION	QTY.	UN.
①	AB (CLASS 2)	52	TON
②	PORTLAND CEMENT CONCRETE PAVEMENT (12.5")	311	SY
④	BITUMINOUS TACK COAT (0.5")	7	TON
⑤	ASPHALTIC CONCRETE FRICTION COARSE (1")	13	TON
⑥	CONCRETE HALF BARRIER PER ADOT STD DTL C-10.52, TYPE F, GUTTER = 2.5'	200	LF
⑦	RETAINING WALL (OTHERS)	200	LF

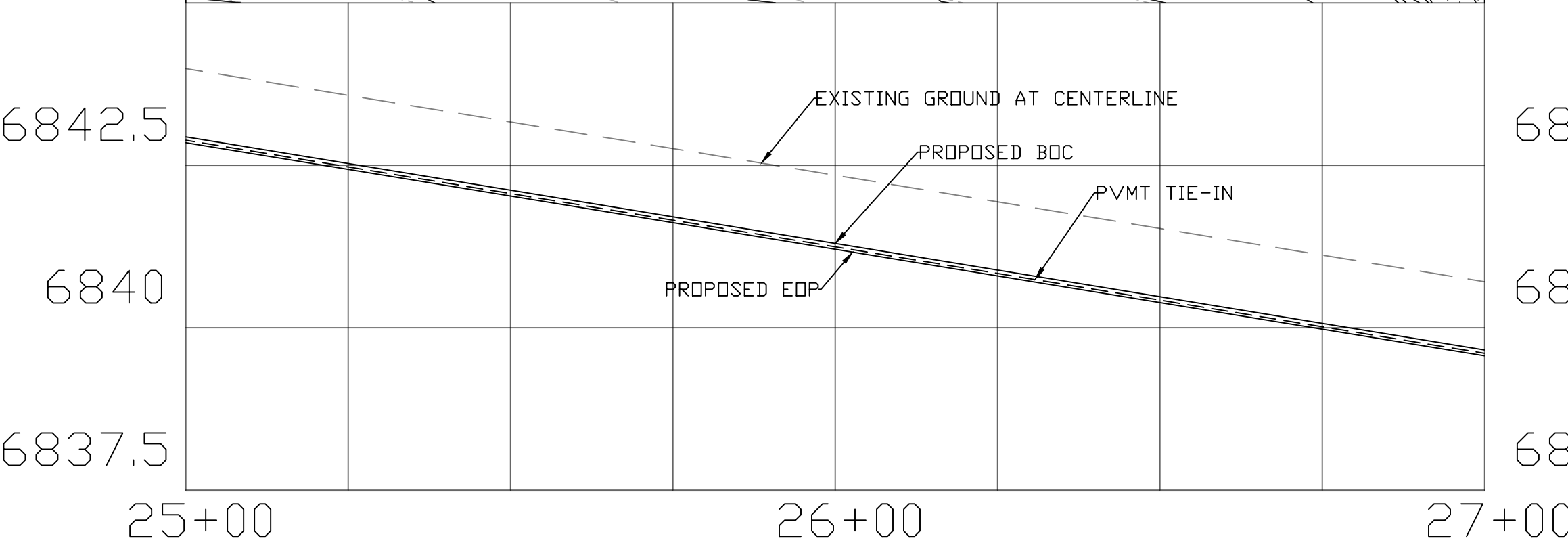
REMOVAL			
NO.	DESCRIPTION	QTY.	UN.
①	SAW CUT	200	LF
②	PCCP	45	SY
③	AGGREGATE BASE	45	SY
④	ASPHALTIC PAVEMENT	45	SY
⑤	CONC HALF BARRIER	200	LF
⑧	LIGHT POST	1	EA
⑨	RETAINING WALL	200	LF

DATE	05/05/20	REV 1:		REV 2:	
I-40/CC IMPROVEMENT PROJECT					
FLAGSTAFF, AZ					LOCATION
DESIGN	MT	SHEET TITLE		PV02	
DRAWN	MT				
CHECK	ZJ	NO. 18		OF 27	

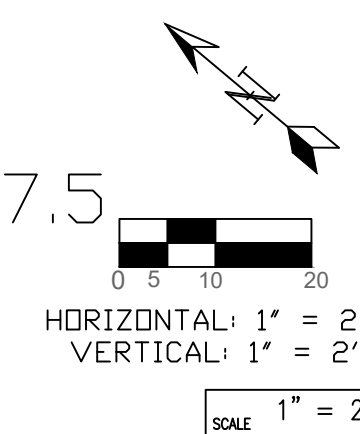
HORIZONTAL: 1" = 20'  
 VERTICAL: 1" = 2'  
 SCALE 1" = 20'

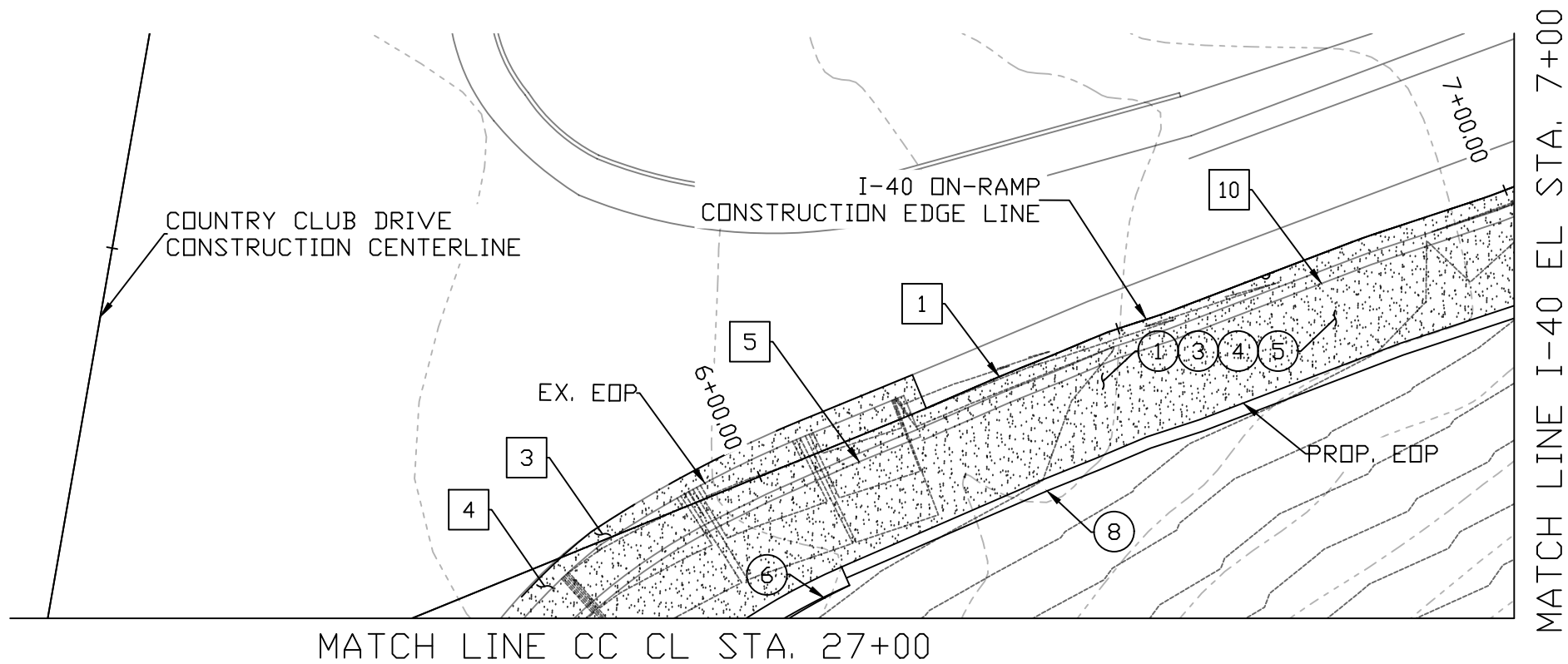
CONSTRUCTION			
NO.	DESCRIPTION	QTY.	UN.
①	AB (CLASS 2)	58	TON
②	PORTLAND CEMENT CONCRETE PAVEMENT (12.5")	346	SY
④	BITUMINOUS TACK COAT (0.5")	8	TON
⑤	ASPHALTIC CONCRETE FRICTION COARSE (1")	15	TON
⑥	CONCRETE HALF BARRIER PER ADOT STD DTL C-10.52, TYPE F, GUTTER = 2.5'	122	LF
⑦	RETAINING WALL (OTHERS)	122	LF
⑨	CATCH BASIN PER MODIFIED ADOT STD DTL C-15.2, INLET LENGTH = 38.5'	1	EA

REMOVAL			
NO.	DESCRIPTION	QTY.	UN.
1	SAW CUT	206	LF
2	PCCP	34	SY
3	AGGREGATE BASE	46	SY
4	ASPHALTIC PAVEMENT	46	SY
5	CONC HALF BARRIER	204	LF
6	CATCH BASIN	1	EA
9	RETAINING WALL	122	LF

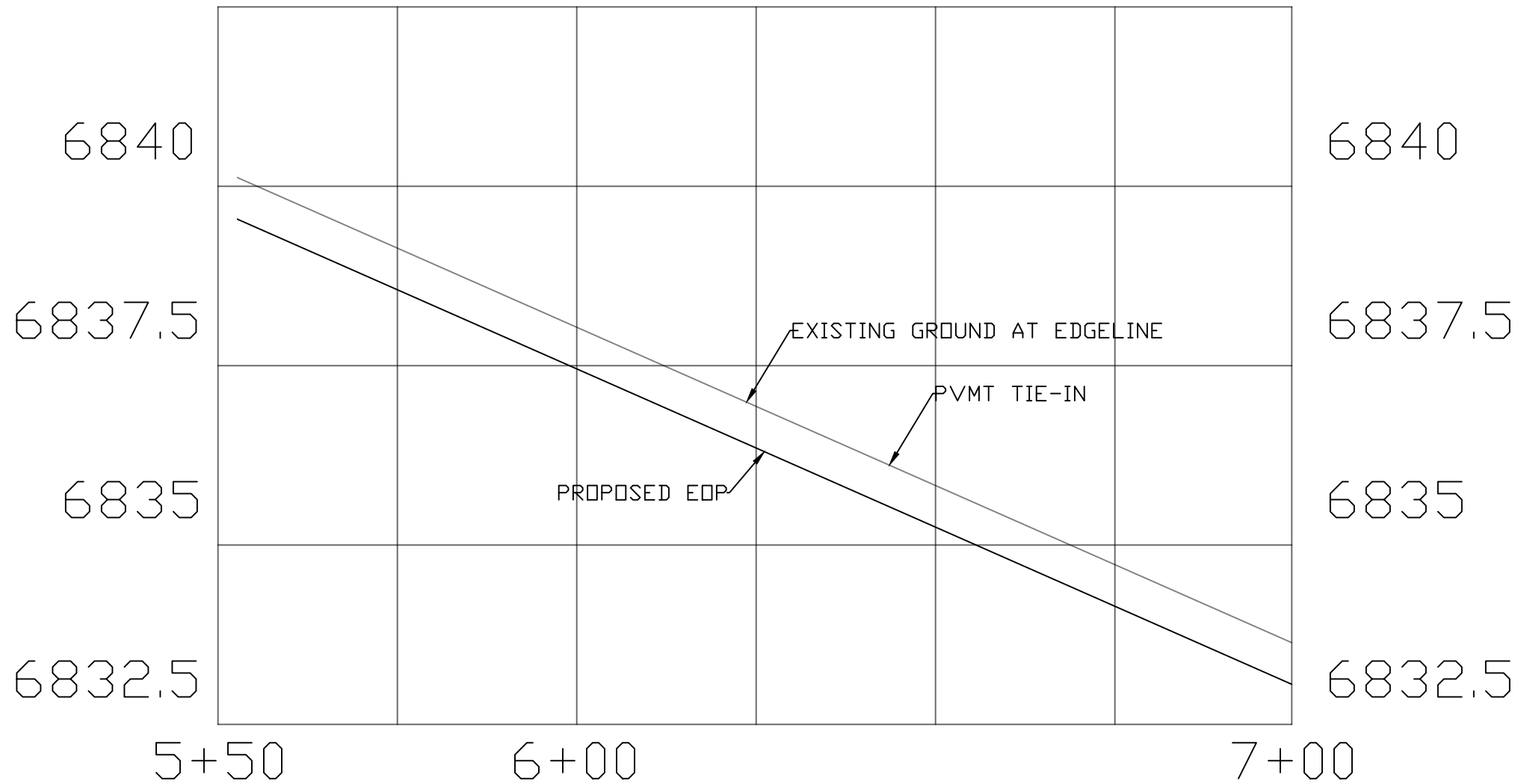


DATE	05/05/20	REV 1:		REV 2:	
I-40/CC IMPROVEMENT PROJECT					
LOCATION					FLAGSTAFF, AZ
DESIGN	MT	SHEET TITLE		PV03	
DRAWN	MT				
CHECK	ZJ	NO. 19		OF 27	





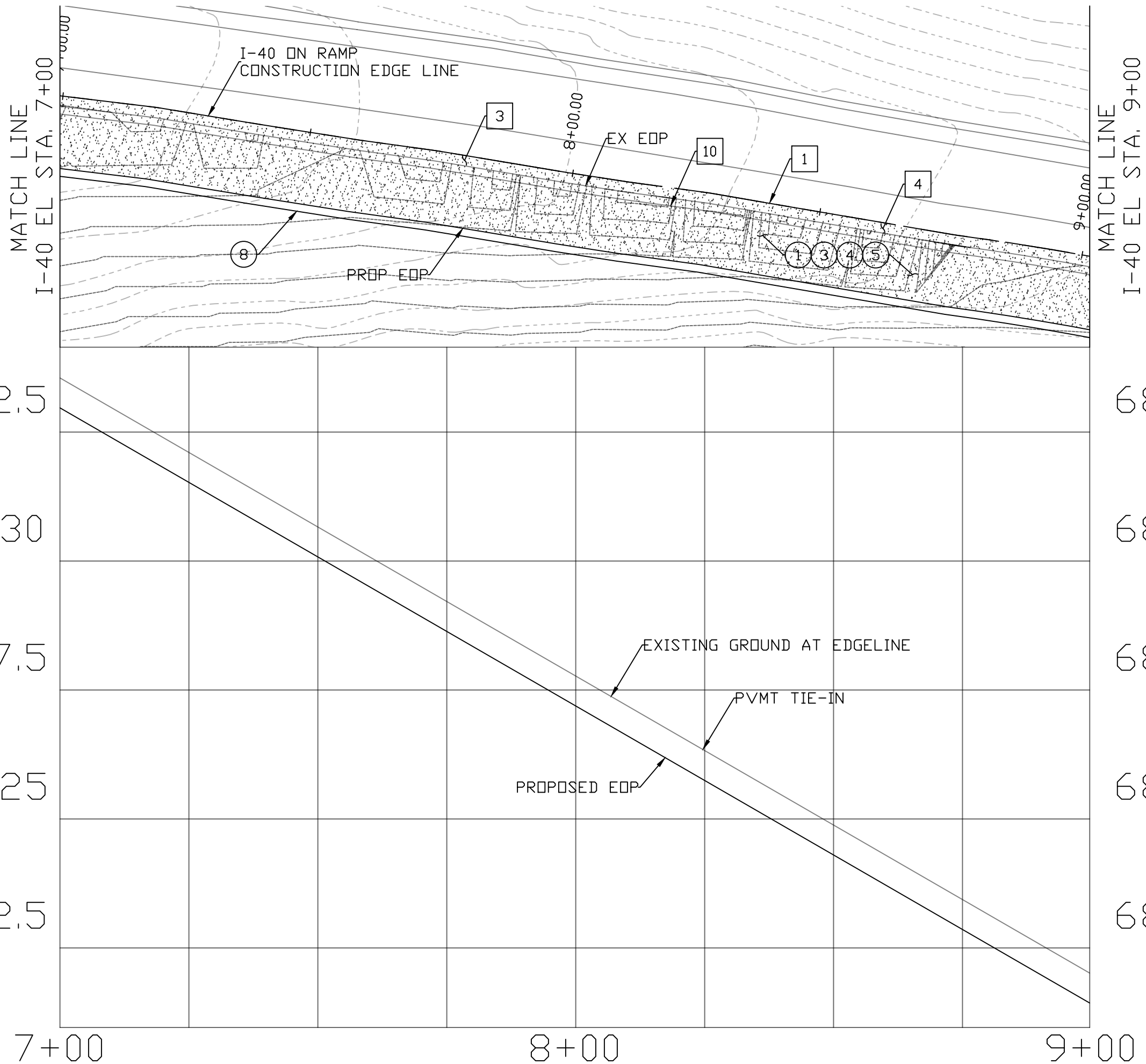
CONSTRUCTION			
NO.	DESCRIPTION	QTY.	UN.
①	AB (CLASS 2)	91	TON
③	ASPHALTIC CONCRETE PAVEMENT (3/4")	55	TON
④	BITUMINOUS TACK COAT (0.5")	14	TON
⑤	ASPHALTIC CONCRETE FRICTION COARSE (1")	9	TON
⑥	CONCRETE HALF BARRIER PER ADOT STD DTL C-10.52, TYPE F, GUTTER = 2.5'	9	LF
⑧	GUARD RAIL PER ADOT STD DTL C-10.01	90	LF
REMOVAL			
NO.	DESCRIPTION	QTY.	UN.
①	SAW CUT	144	LF
③	AGGREGATE BASE	32	SY
④	ASPHALTIC PAVEMENT	32	SY
⑤	CONC HALF BARRIER	29	LF
⑩	GUARD RAIL	79	LF



DATE	05/05/20	REV 1:		REV 2:	
I-40/CC IMPROVEMENT PROJECT		FLAGSTAFF, AZ			
PV04		DRAWN	MT	NO. 20 OF 27	
		CHECK	ZJ		

HORIZONTAL: 1" = 20'  
VERTICAL: 1" = 2'

SCALE 1" = 20'



CONSTRUCTION			
NO.	DESCRIPTION	QTY.	UN.
①	AB (CLASS 2)	131	TON
③	ASPHALTIC CONCRETE PAVEMENT (3/4")	79	TON
④	BITUMINOUS TACK COAT (0.5")	20	TON
⑤	ASPHALTIC CONCRETE FRICTION COARSE (1")	14	TON
⑧	GUARD RAIL PER ADOT STD DTL C-10.01	202	LF
REMOVAL			
NO.	DESCRIPTION	QTY.	UN.
①	SAW CUT	202	LF
③	AGGREGATE BASE	45	SY
④	ASPHALTIC PAVEMENT	45	SY
⑩	GUARD RAIL	202	LF

DATE: 05/05/20  
 REV 1:  
 REV 2:

I-40/CC  
 IMPROVEMENT PROJECT

LOCATION: FLAGSTAFF, AZ

DESIGN: MT  
 DRAWN: MT  
 CHECK: ZJ

SHEET TITLE: PV05  
 NO. 21 OF 27

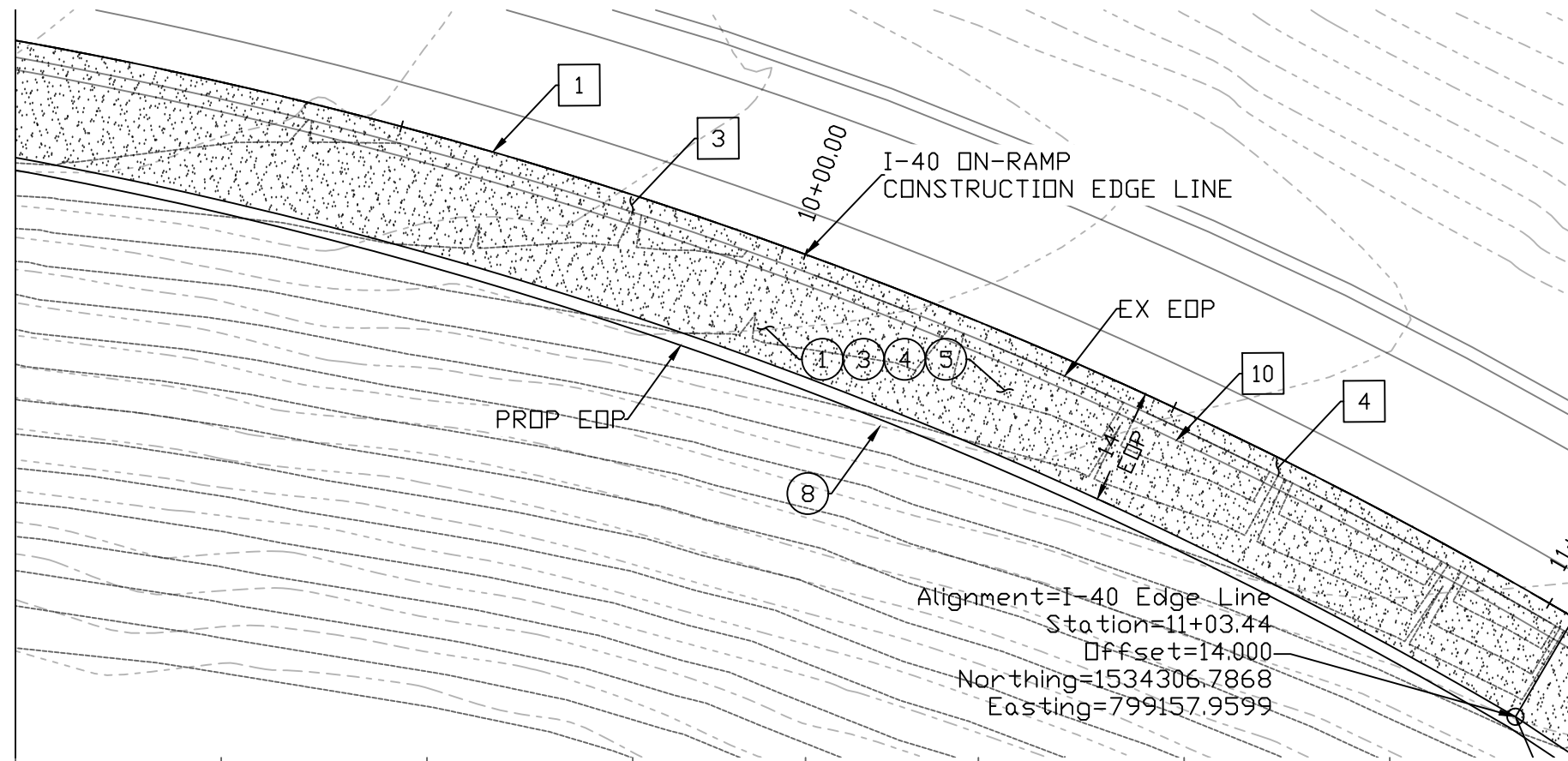
SCALE: 1" = 20'

HORIZONTAL: 1" = 20'  
 VERTICAL: 1" = 2'

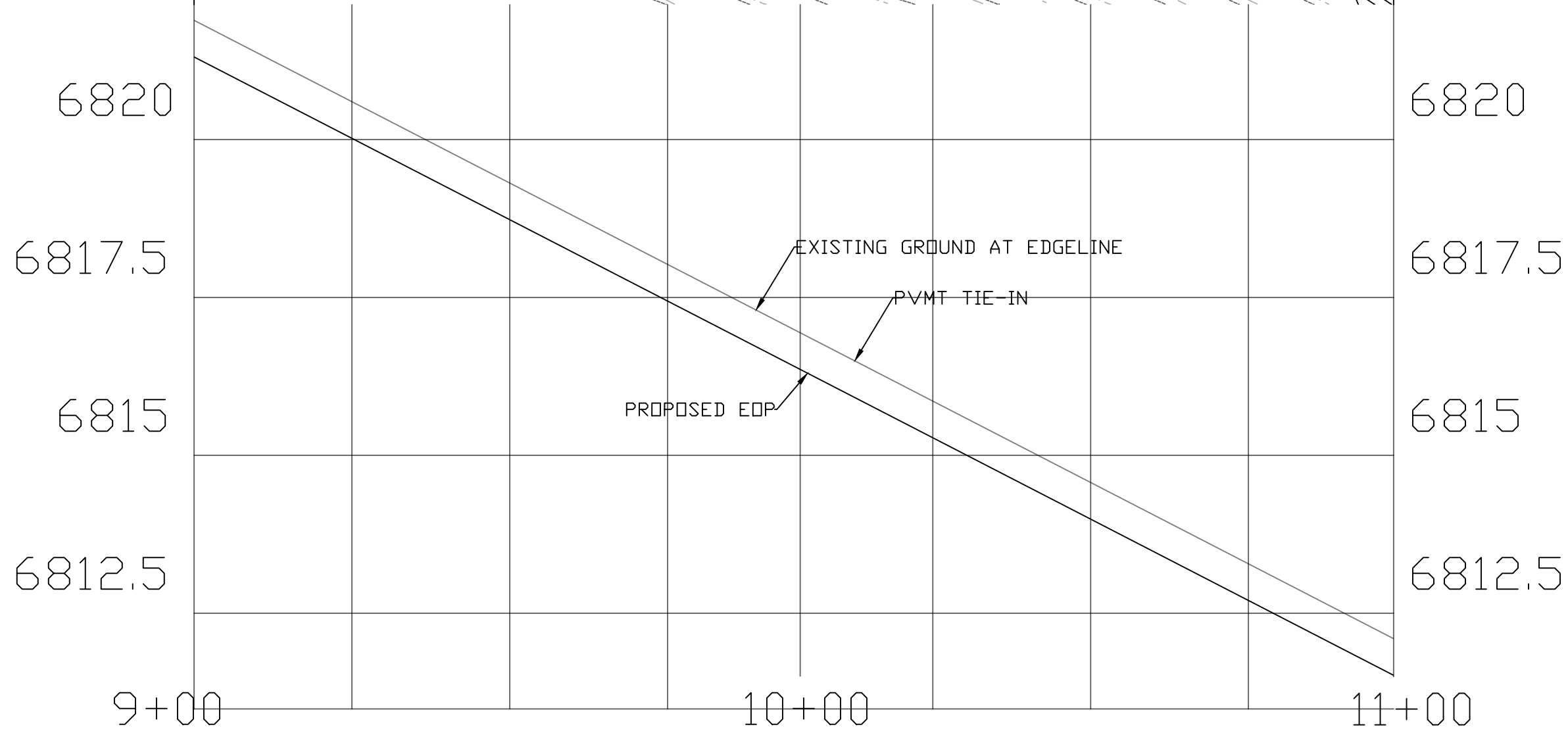


MATCH LINE I-40 EL STA. 9+00

MATCH LINE I-40 EL STA. 11+00



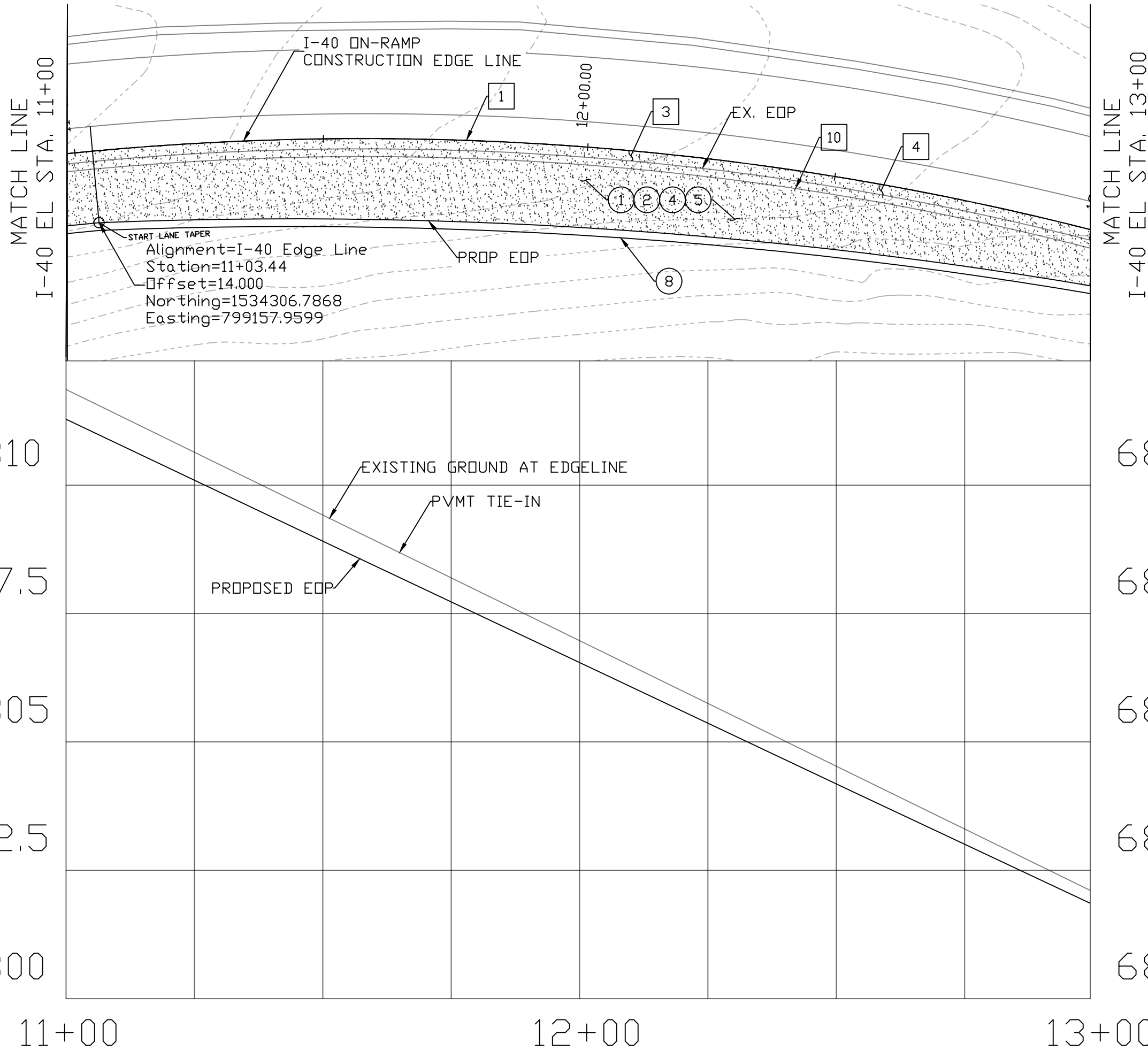
Alignment=I-40 Edge Line  
 Station=11+03.44  
 Offset=14.000  
 Northing=1534306.7868  
 Easting=799157.9599



CONSTRUCTION			
NO.	DESCRIPTION	QTY.	UN.
1	AB (CLASS 2)	132	TON
3	ASPHALTIC CONCRETE PAVEMENT (3/4")	79	TON
4	BITUMINOUS TACK COAT (0.5")	20	TON
5	ASPHALTIC CONCRETE FRICTION COARSE (1")	14	TON
8	GUARD RAIL PER ADOT STD DTL C-10.01	195	LF
REMOVAL			
NO.	DESCRIPTION	QTY.	UN.
1	SAW CUT	205	LF
3	AGGREGATE BASE	46	SY
4	ASPHALTIC PAVEMENT	46	SY
10	GUARD RAIL	205	LF

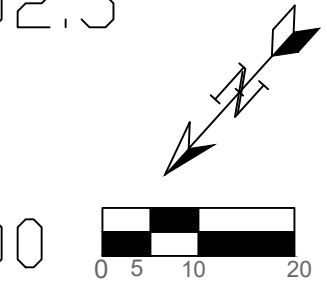
DATE	05/05/20	REV 1:		REV 2:	
I-40/CC IMPROVEMENT PROJECT		FLAGSTAFF, AZ			
		DESIGN MT		SHEET TITLE	
		DRAWN MT		PV06	
CHECK MT		NO. 22 OF 27			

HORIZONTAL: 1" = 20'  
 VERTICAL: 1" = 2'  
 SCALE 1" = 20'



START LANE TAPER  
 Alignment=I-40 Edge Line  
 Station=11+03.44  
 Offset=14.000  
 Northing=1534306.7868  
 Easting=799157.9599

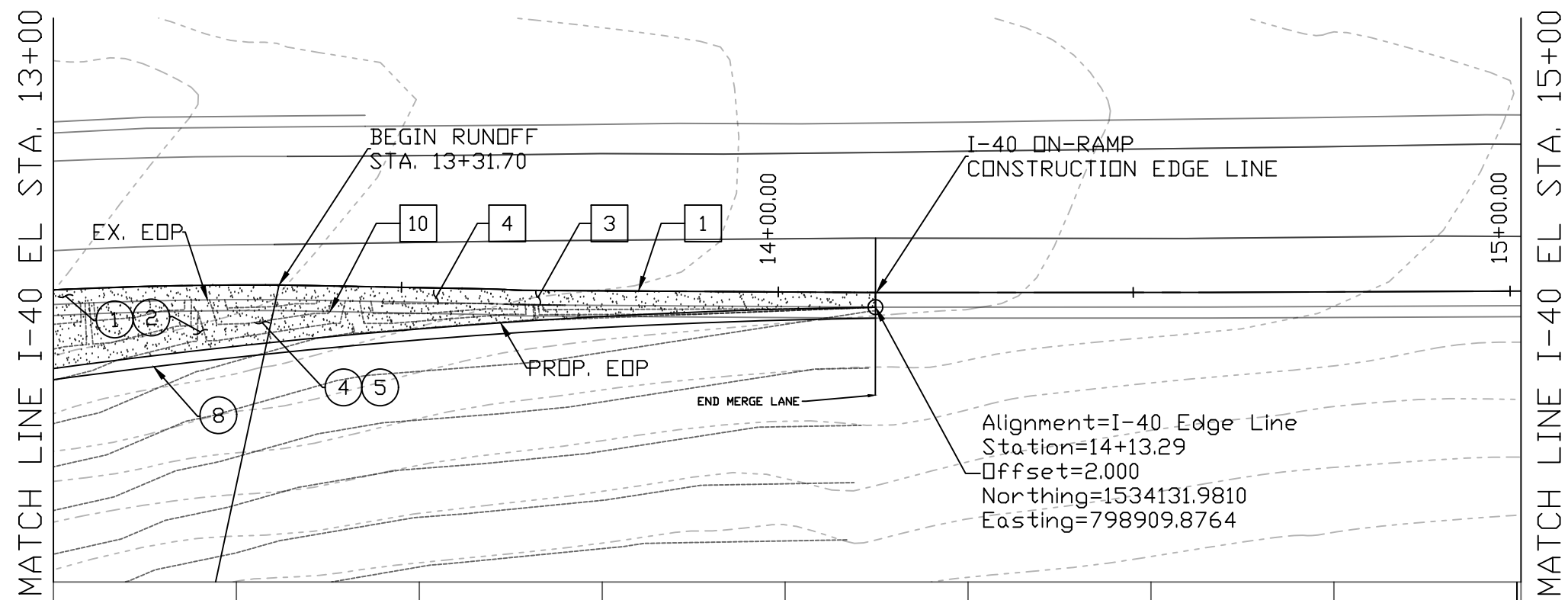
CONSTRUCTION			
NO.	DESCRIPTION	QTY.	UN.
①	AB (CLASS 2)	135	TON
③	ASPHALTIC CONCRETE PAVEMENT (3/4")	81	TON
④	BITUMINOUS TACK COAT (0.5")	21	TON
⑤	ASPHALTIC CONCRETE FRICTION COARSE (1")	14	TON
⑧	GUARD RAIL PER ADOT STD DTL C-10.01	196	LF
REMOVAL			
NO.	DESCRIPTION	QTY.	UN.
①	SAW CUT	202	LF
③	AGGREGATE BASE	45	SY
④	ASPHALTIC PAVEMENT	45	SY
⑩	GUARD RAIL	202	LF



HORIZONTAL: 1" = 20'  
 VERTICAL: 1" = 2'

SCALE 1" = 20'

DATE	05/05/20	REV 1:		REV 2:	
I-40/CC IMPROVEMENT PROJECT					
LOCATION					FLAGSTAFF, AZ
DESIGN	MT	SHEET TITLE			
DRAWN	MT	PV07			
CHECK	ZJ	NO. 23 OF 27			



CONSTRUCTION			
NO.	DESCRIPTION	QTY.	UN.
①	AB (CLASS 2)	29	TON
③	ASPHALTIC CONCRETE PAVEMENT (3/4")	17	TON
④	BITUMINOUS TACK COAT (0.5")	5	TON
⑤	ASPHALTIC CONCRETE FRICTION COARSE (1")	3	TON
⑧	GUARD RAIL PER ADOT STD DTL C-10.01	113	LF
REMOVAL			
NO.	DESCRIPTION	QTY.	UN.
①	SAW CUT	115	LF
③	AGGREGATE BASE	26	SY
④	ASPHALTIC PAVEMENT	26	SY
⑩	GUARD RAIL	113	LF

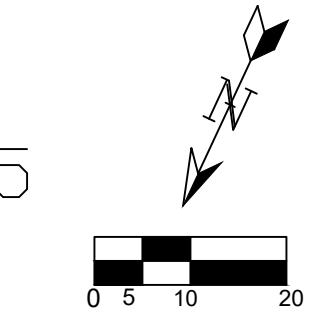
Alignment=I-40 Edge Line  
 Station=14+13.29  
 Offset=2.000  
 Northing=1534131.9810  
 Easting=798909.8764

6802.5  
 6800  
 6797.5  
 6795  
 13+00

6802.5  
 6800  
 6797.5  
 6795  
 15+00

EXISTING GROUND AT EDGELINE  
 PVMT TIE-IN  
 PROPOSED EDP

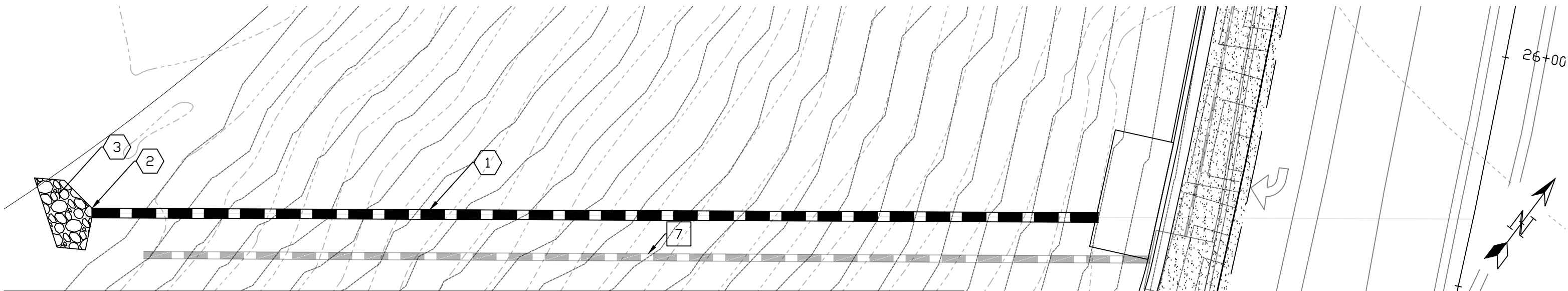
14+00



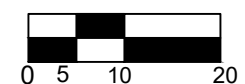
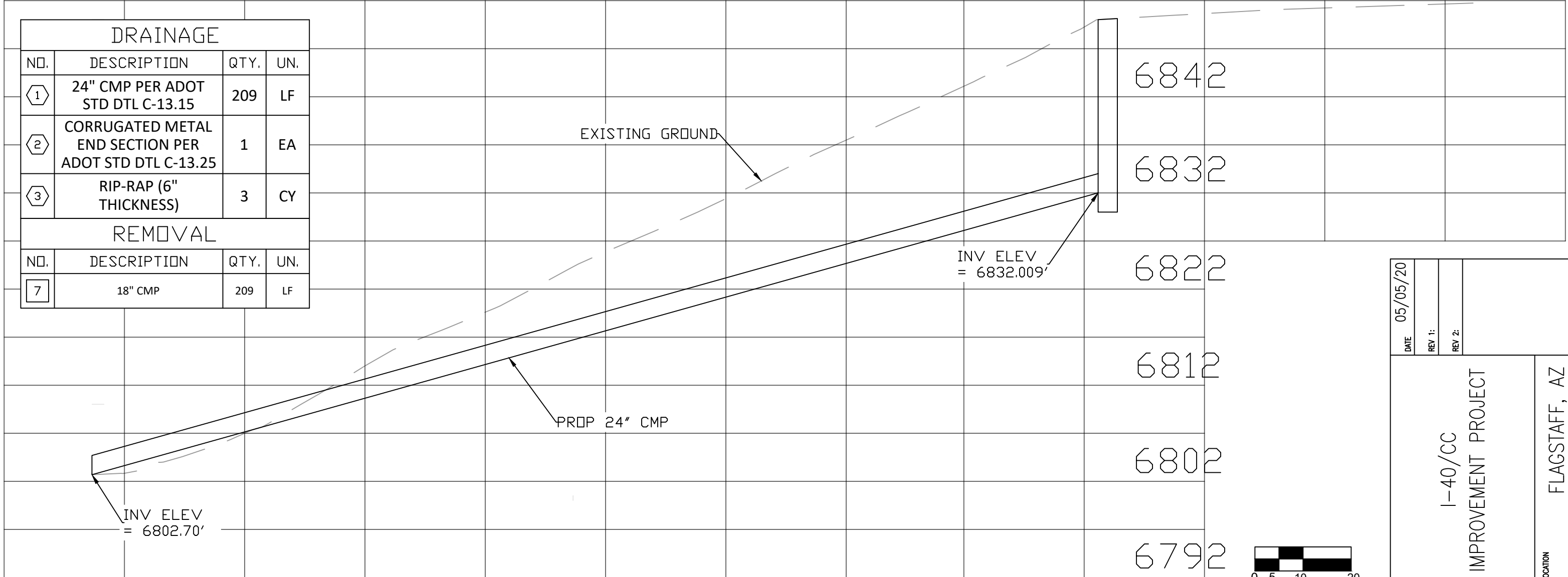
HORIZONTAL: 1" = 20'  
 VERTICAL: 1" = 2'

SCALE 1" = 20'

DATE	05/05/20	REV 1:		REV 2:	
I-40/CC IMPROVEMENT PROJECT					
LOCATION					FLAGSTAFF, AZ
DESIGN	MT	SHEET TITLE		PV08	
DRAWN	MT				
CHECK	ZJ	NO.	24	OF	27



DRAINAGE			
NO.	DESCRIPTION	QTY.	UN.
①	24" CMP PER ADOT STD DTL C-13.15	209	LF
②	CORRUGATED METAL END SECTION PER ADOT STD DTL C-13.25	1	EA
③	RIP-RAP (6" THICKNESS)	3	CY
REMOVAL			
NO.	DESCRIPTION	QTY.	UN.
⑦	18" CMP	209	LF



HORIZONTAL: 1" = 20'  
 VERTICAL: 1" = 10'

SCALE 1" = 20'

DATE	05/05/20	REV 1:		REV 2:	
I-40/CC IMPROVEMENT PROJECT					
LOCATION					FLAGSTAFF, AZ
DESIGN	MT	SHEET TITLE		DR01	
DRAWN	MT	NO.		25	OF 27
CHECK	ZJ	OF			

11+00

12+00

13+00